



**B 200 H**  
**B 200 H iLink®**

**MÁXIMA EFICIENCIA PARA LA LIMPIEZA URBANA**  
**MAXIMUM EFFICIENCY FOR URBAN CLEANING**  
**KEHRFAHRZEUG FÜR DIE KOMMUNE UND DEN DIENSTLEISTER**  
**LA NOUVELLE SOLUTION POUR LE NETTOYAGE DES RUES**



**B 200 H iLink®**



**AUSA Center, S.L.U.**  
Ctra. de Vic Km 2.8  
08243 Manresa - Barcelona  
Tel.: +34 93 874 73 11  
  
Pol. Ind. Coslada - Marconi 15-17  
28823 Coslada - MADRID  
Tel.: +34 91 669 00 06  
  
[ausa@ausa.com](mailto:ausa@ausa.com) · [www.ausa.com](http://www.ausa.com)

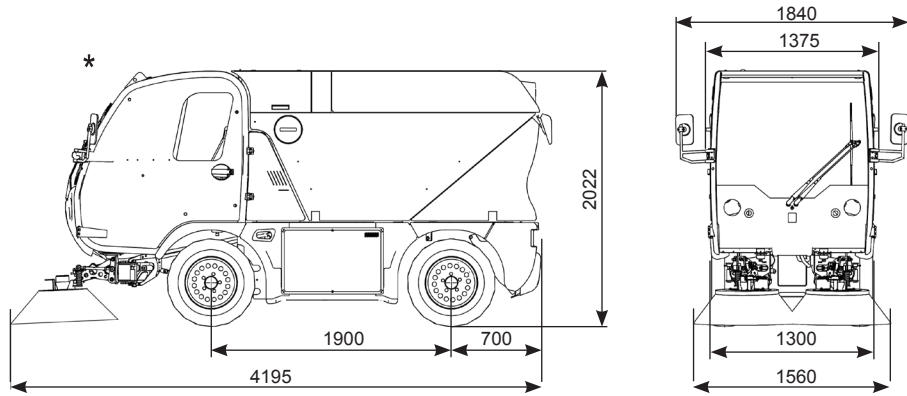
**AUSA France** 11 Rue Gustave Eiffel, 66350 TOULOUGES - Tel.: +33 (0) 4 68 54 38 97 - E-mail: [ausa.france@ausa.com](mailto:ausa.france@ausa.com)  
**AUSA Deutschland** Tel.: +49 (0) 2384 9889905 - E-mail: [ausa.deutschland@ausa.com](mailto:ausa.deutschland@ausa.com)  
**AUSA UK** Tel.: +44 (0) 7970639988 - E-mail: [ausa.uk@ausa.com](mailto:ausa.uk@ausa.com)  
**AUSA Brasil** Avenida Belizario Ramos 2276 - Lages - SC, 88506-000 - Tel.: +55 11 9 8786 6014 - E-mail: [ausa.brasil@ausa.com](mailto:ausa.brasil@ausa.com)  
**AUSA U.S. CORP.** Tel.: +1 (917) 328 0770 - E-mail: [ausa.us@ausa.com](mailto:ausa.us@ausa.com)  
**AUSA Beijing Rep. Office** Room 403, Moma Building, N.199 - Chaoyang bei road, Chaoyang District - 100026 BEIJING  
Tel.: +86 10 8598 7386 - E-mail: [ausa.china@ausa.com](mailto:ausa.china@ausa.com)



# B 200 H B 200 H iLink®



www.ausa.com



## B 200 H / B 200 H iLink®

### TECHNICAL SPECIFICATIONS

		4x2x2	4x2x4	4x4x4 (FlowTrack®)
Waste Hopper	Capacity	2 m <sup>3</sup>		
	Dump Height	1580 mm		
	Discharge Type	Rear tilting		
Water Tank	Material	Stainless Steel		
	Capacity	300l		
Turbine	Material	HDPE Rotomoulding		
	Max Flow	9000 m <sup>3</sup> /h a 1600 rpm		
Suction Nozzle	Flow at optimal working speed	6000 m <sup>3</sup> /h a 1100 rpm		
	Turbine speed	Hydraulic control on turbine speed		
	Fan material	Steel - optionally Stainless Steel		
Brush System	Nozzle width	800 mm		
	Material	Stainless Steel		
Maneuverability	Type	2 independent brushes with control on width and height of brushing area		
	Floor load	2 modes - Hydraulically controlled or mechanical floating system with weight compensation		
	Brush speed	Hydraulic control		
	Effective Sweeping width	2200 mm		
	Max Sweeping width	2500 mm		
	Brush diameter	850 mm		
	Type of brush	Mix Steel - Nylon with fast coupling system		
Engine	Brush system material	Stainless Steel		
	Turning radius Wall to wall	4040 mm		3195 mm
	Inner turning radius	2200 mm		1400 mm
Transmission	Turning radius Kerb to kerb	3300 mm		2700 mm
	Make	VM Motoni		
	Type	R754		
	Emissions	Euro 6		
	Power	68 kW @ 2600 rpm (92 cv @ 2600 rpm)		
	N. Of Cylinders	4		
	Torque	380 Nm @ 1100rpm		
Steering	Cooling system	Liquid with variable speed fan and auto cleaning system		
	Fuel	Diesel + AdBlue		
	Tank capacity	60 l + AdBlue		
Brakes	Type	2 speed hydrostatic Rexroth with wheel engines on rear axle		
	Max speed	40 km/h		
	Max working speed	25 km/h		
	Gradient negotiable	27,5% at full load (30% at 4500 kg)		37% at full load
Motor skills	Motor skills	Rear wheel drive		Permanent 4WD FlowTrack®
	Service	Servo assisted brake , disk brake on front wheels and drum brakes on rear wheels		Servo assisted brake. Drum brakes on front and rear wheels
Steering	Parking	Multidisc operated by oil and electronically driven		
	Type	Orbitrol hydraulic steering		
Modes	Front		Front / Front + Rear	
	Rear	Hydraulic damper & helicoidal spring		
Suspension	Front	Hydraulic damper, helicoidal spring & anti roll bar		
	Rear			
Weight	Unloaded weight *	3300 kg		3365 kg
	Gross weight	5000 kg		

### STANDARD EQUIPMENT

- High visibility cabin with inspection windows for Nozzle and Brushes
- Driver seat with suspension / Driver position on the right side of the vehicle
- Adjustable passenger seat
- Steering wheel with regulation on height and depth
- High capacity heater
- Electronic control for the speed of the engine
- Electronic control for the speed of the vehicle
- Sweeping control system with proportional joysticks
- Hopper filtration system with chains for leaf sweeping
- Radio pre-installation
- Approved lighting equipment with rotating beacon and 3 LED flashing lights on the back
- AUSA fuel saving system (ASF)
- Sweeping water recycling system

### OPTIONAL EQUIPMENT

- 3rd broom 850 m (overall width sweeping 2.850 mm)
- Manual and extensible suction hose (4,5m)
- Water high pressure equipment (10m hose; 150 bar)
- Rear and Nozzle cameras
- Driver seat with pneumatic suspension / Left hand drive (LHD)
- Electrically adjustable rear mirrors with heater / LED Working lights on the top of cabin
- Air conditioning / Radio CD / MP3 / Bluetooth
- Broom working lights for night work
- Snow-blade width 1500 mm with fast removable broom system
- Water washer bar (spraying width 1500 mm) with water tank capacity 2000l (Mod. B 200 H iLink®System)
- Three way hydraulic tipping body 1840x1300x420mm (Mod. B 200 H iLink®System)
- Pole for high pressure water cleaning (Mod. B 200 H iLink®System)
- Salt spreader capacity 1m<sup>3</sup> (Mod. B 200 H iLink®System)
- LINK® System for the fast coupling / uncoupling of hopper, brushes and mouth (Mod. B 200 H iLink®System)